



UNIVERSITY
OF HULL

Appointment of
**Wilberforce Professor of
Slavery and Emancipation
and Director of the
Wilberforce Institute**



Appointment details –
June 2019

Executive Summary

The University of Hull is seeking to appoint a Wilberforce Professor of Slavery and Emancipation and Director of the Wilberforce Institute, who will take up the post as soon as possible. This candidate pack sets out the role description, person specification and the application protocol. It also provides background information regarding the University of Hull.



Contents

Message from the Vice-Chancellor

4



The University of Hull - A Place To Shine

6



Culture at Hull

10



About the Role: Wilberforce Professor of Slavery and Emancipation and Director of the Wilberforce Institute

14

Wilberforce Professor of Slavery and Emancipation and Director of the Wilberforce Institute

18

- Key Responsibilities
- Person Specification
- Further Information
- Appointment Process
- Your Life in East Yorkshire



Message from the Vice-Chancellor

Thank you for your interest in the position of Wilberforce Professor of Slavery and Emancipation and Director of the Wilberforce Institute at the University of Hull.

For me, assuming the position of Vice-Chancellor in August 2017 was an exciting opportunity which offered a chance to make a tangible difference at a wonderful institution. At Hull, we pride ourselves on being a warm and welcoming community, passionate about our University and the role we play in society, and inspired by our wonderful campus and enthusiastic colleagues and students.

The University of Hull is the 14th oldest university in England, but is modern and vibrant in outlook and approach. We have key areas of research strength, are deeply committed to delivering an excellent experience to our diverse student body, and are focussed on delivering strongly as an internationally-engaged, civic institution.

There is no doubt that, like others, we are feeling the increasing pressures associated with the current febrile and challenging higher education environment. Importantly, we are actively transforming our University to meet these challenges, with clear strategic intent and an engaged approach to leadership. We see this new role as vital to our ambitions

and to meeting the needs of our students, staff and our regional, national and global collaborators and partners.

To this end, over the past 18 months, the University Leadership Team and I have been laying the foundations that will pave the way for accelerated success. The Professor of Slavery and Emancipation and Director of the Wilberforce Institute for the study of Slavery and Emancipation will be an important and valued member of our team, someone with a passion for making a difference, with a keen focus on performance and the pursuit of excellence. We are excited about our future, and are looking for a strong leader who will work with us to drive forward our transformation and achieve the University's bold ambitions.

This is a time of great opportunity for Hull, and I hope that you are excited by the prospect of joining us. Please do not hesitate to ask should you require more information or would like a conversation. Personally, I very much look forward to receiving your application for what is undoubtedly a stimulating, challenging and professionally fulfilling role.

Yours sincerely

Professor Susan Lea,
Vice-Chancellor



The Vice-Chancellor, Professor Susan Lea

Professor Susan Lea is passionate about the role of universities in transforming lives and positively impacting society. She has a track record of leading successful, inclusive organisational change with a consequent raising of performance.

Professor Lea brings extensive leadership experience, from a broad range of universities. Her career spans research and teaching intensive universities, as well as those that play a key role in their region, with senior positions at the University of Greenwich, King's College London and, earlier, the University of Plymouth.

Professor Lea began her career as a lecturer in psychology at the University of Cape Town. She moved to the University of Plymouth in 1994 where she held a number of senior positions, at both faculty and university level, whilst maintaining her commitment to her research into domestic and sexual violence. She moved to King's

College London in 2010 where she simultaneously held a number of senior management roles, including Dean of Education and Professor within the Institute of Psychiatry, Psychology and Neuroscience. She was King's Interim Vice-Principal (Education) from November 2012 to March 2013, and went on to hold a number of senior, cross-institutional roles.

Professor Lea was appointed Deputy Vice-Chancellor (Academic) at the University of Greenwich in April 2015, where her responsibilities included playing a key role in developing the strategic vision for the University, driving and managing change in order to improve the quality and scope of staff engagement, improving academic outcomes and leading, with the DVC (Research), the integration of teaching and learning into the University's research strategy.

She now brings that vision and experience to Hull, with a commitment to realise the full potential of the University and contribute significantly to the city and region.



When I took over as Director in February 2013, the Wilberforce Institute already had a well-established international reputation...



thanks largely to the work of my predecessor, Professor David Richardson. While I was understandably keen to continue David's legacy, particularly in the area of historical slavery, I was equally determined to expand the Institute's work on contemporary slavery, and to explore the relationship between the two, which I have always seen as our unique selling point.

Since 2013, we have invested heavily in the contemporary field, to the point where we now have a cluster of ECRs working in this area, together with a growing number of funded PhD students. Ahead of the Modern Slavery Act (2015), we also took the decision to set up a Slavery and Trafficking Risk Assessment Service for Business Supply Chains, led by a trained social auditor, Cristina Talens. Our clients include Waitrose, Aldi and Yorkshire Water. Cristina has also led our efforts to supply training for business around the Modern Slavery Act, both online and face-to-face.

These different initiatives have given the Institute a much higher profile among a range of stakeholders, including business, NGOs, policymakers and

heritage professionals. We are justifiably proud of our growing reputation in the field of contemporary slavery and see this a developing area of strength.

Our postgraduate community is the lifeblood of the Institute, and over the past six and a half years I have been fortunate enough to oversee its growth and expansion. We continue to produce young scholars of startling commitment and energy, none better than Dr Alicia Kidd, who as well as being a fine researcher is vice-chair of the Humber Modern Slavery Partnership and was commended for her work in this role during 2017 by the High Sheriff of East Riding. Others have made an impact in the heritage sector or have gone on to academic positions in the UK, Africa and the USA.

It has been a pleasure to watch these young scholars grow and become part of the wider Wilberforce community. Under my directorship, we have also forged much closer links with other HEIs, chief among them Liverpool and Nottingham, and these relationships have been at the heart of our success in attracting large research council grants,

principally from the AHRC. We have also forged links with European partners through Horizon 2020 funding and have raised our profile in Africa and India, the latter a new area of interest for us, thanks largely to the efforts of Dr Lorena Arocha.

Together, we have achieved a lot in the past six and a half years. The Wilberforce Institute is a unique brand with a distinguished record of producing ground-breaking research that has had a significant impact, both nationally and internationally. For me, the Institute's inter-disciplinary focus has always been its great strength, creating new insights and synergies, particularly at the intersection of historical and contemporary slavery, where I believe we have a critical role to play in shaping public perceptions around slavery-related issues.

The broader significance of what the Institute does (and has done in the past) was recognized in 2105 when we were awarded a Queen's Anniversary Prize. We continue to build on that achievement, both in terms of our research and our engagement and outreach, hence our commitment to working with schools, heritage organizations and Hull's Freedom Festival Board.

What has always excited me about the role of Director is the opportunity to engage with a range of different stakeholders, from policymakers to heritage professionals; that and the pleasure of working with young scholars who are committed to making a difference to the society in which we live.

Professor John Oldfield



The University of Hull – A Place To Shine

We are almost 2,500 people who are ambitious about the future: ours, our staff, our students, our alumni and the world around us. Our stellar research and brilliant teaching are designed to inspire thinking and expand horizons. As one of England's oldest universities, our motto *Lampada Ferens* – carrying the light of learning – remains as relevant as ever as we continue to empower people to shape the future.



Whether it's about seizing new opportunities, broadening your horizons or simply doing what you love, if you have the energy and drive to succeed you will go far at the University of Hull."

Mark Lorch,
Associate Dean (International) and Professor in Science Communication and Public Engagement

Join a university where everyone matters, everyone can grow, and everyone can make a difference. This is a place to shine.

We believe in our students

We believe in our students, unlocking their potential to shape their future. That's why we invest in our students and take the time to get to know them, equipping them with the skills, knowledge, experience and confidence to help them push beyond where they thought they could go, in whatever career they choose.

Last year, we were awarded Silver in the Teaching Excellence Framework, which recognises and rewards excellence in learning and teaching in higher education institutions. In particular, we were praised for excellent student outcomes.

With 16,500 students, one in six come to the University from outside the UK and from more than 100 countries. Moreover, they leave with the skills, values and creative potential that will drive their future careers and enable them to

contribute to the world as rounded and responsible citizens.

It is testament to the hard work and dedication of our students, and the University staff who teach and support them, that 96.1% of our graduates go on to find employment or further study within six months of graduating (Destination of Leavers from Higher Education for the academic year 2015/16, published by HESA June 2017).



When I chose Hull University, I chose it completely based on the course. It was just the best by miles. And what Hull University can give you is the widest option of possibilities that you didn't expect you were going to try.

Once you've got those skills you use them, you apply them all the time and you're constantly supported by them and given guidance, but at the end of the day you are doing your own projects and that is great, gives you that feeling of independence."

Carys Taverner
Student





We are combining the brightest minds with the finest R&D facilities to advance the treatment of wounds.”

Stewart McKinlay,
Vice President of Research & Innovation at Smith & Nephew

Life-changing research

We look at things in a different light, working together to find new ways of seeing and understanding.

From slavery and emancipation to health and medicine, logistics and supply chain, and energy and environment; our research is making a real difference by addressing global challenges.

The University ranked in the top 50 UK institutions based on research power in the 2014 Research Excellence Framework, with 62% of the submitted research classified as internationally excellent or world-leading, and areas such as Geography and Computer Science achieving a top five ranking, based on research impact.

We're building on our strengths, creating a thriving and inspiring, 'research rich' environment, working towards achieving a top 50 research profile in the 2021 REF.

Confidence in our research capability has never been stronger. In response to the changing and increasingly competitive environment in which we operate, our focus over the last year has been on using our expertise to develop mutually beneficial, long-term collaborative relationships with external partners. As a result, the University has significantly increased (by 35%) the number of competitively won research grants over the last year.

Here's a flavour of our thought-provoking, game-changing research



Yorkshire Cancer Research is investing over £5-million into research programmes to tackle cancer inequalities in Hull.



The University's Wilberforce Institute's life changing slavery research received national recognition when it was awarded the prestigious Queen's Anniversary Prize in 2016.

Our journey continues

We are extremely proud of the positive impacts we make on the lives of people and societies through our education and research.

A £200-million investment programme in high-quality teaching and learning facilities, IT infrastructure, research laboratories, social spaces and sporting facilities has seen our campus transformed; a transformation that is already offering significant benefits to students, staff and the wider community. We are also working with the University Partnership Programme Limited, a leading provider of on-campus student accommodation, who have leveraged a further £153-million of investment and will deliver additional, excellent accommodation options for our students.

The University's evolution extends well beyond physical change. Our focus on improving the way that we operate and work with others has helped us to form valuable partnerships and is creating new opportunities for our students, the businesses and other organisations we work with and our research partners. One of the highlights is our significant contribution, as a Principal Partner, to Hull's success during its reign as the UK City of Culture 2017. Building on this success, we are bringing the best of British science to Hull and the Humber, hosting the British Science Festival in September 2018. This gives us the opportunity to showcase our significant contribution to this field - focusing on three key areas - energy and the environment; health and the medical sciences; and exploration, movement and discovery.

With a keen focus on performance and pursuing excellence in all that we do, the University of Hull continues its journey, one that is led by our commitment to delivering excellent research and a fantastic student experience.



Researchers at the University now have direct access to one of the most powerful computers in the country, following a £2.1 million investment. Called Viper, it is the fastest machine of any northern university and the seventh fastest of any university in the country.



This means our research can go from something you would never dream of doing to something you can do in a month. In terms of being competitive on a world stage, this is absolutely crucial.”

Dr David Benoit, Senior Lecturer in Physical Chemistry

Culture at Hull

Visitors admiring the National Portrait Gallery: Paul Smith to JK Rowling exhibition



World-class events, unforgettable experiences

Our commitment to creativity has been demonstrated through our Principal Partnership with Hull UK City of Culture 2017.

As a producer and supporter of creativity, arts and culture, we seized the opportunity to bring a world-class programme of events to the University and have created unforgettable experiences for our students, staff and the wider community.

Record visitor numbers on campus

In 2017, the University welcomed record visitor numbers and here on campus. Over 60,000 people, including many first-time visitors, enjoyed the impressive range of world-class exhibitions, installations, debates, music and drama, held as part of our cultural programme.

Hosted some of the world's greatest artists

Redeveloped to national standard as part of a £28-million investment in our Brynmor Jones Library, our art gallery hosted some of the world's greatest artists as part of exhibitions with partners such as the British Museum and National Portrait Gallery. 'Lines of Thought - Drawing from Michelangelo to Now', showcased works from prominent masters including Monet, Picasso, Rembrandt and Riley, and the National Portrait Gallery loan exhibition displayed images of stars from JK Rowling to Sir Ian McKellen.

Putting our graduates back in the spotlight

We have also put some of Hull's most famous cultural experts back in the spotlight including graduate and former lecturer Anthony Minghella, the Oscar-winning, Hollywood film director, through a popular retrospective. In addition, a

headline-grabbing exhibition on the life and work of former University Librarian Philip Larkin offered a new perspective on the man described as 'Britain's Favourite Poet' with previously unseen personal artefacts.

Giving our students a chance to shine

Our campus was at the heart of the action - and so were our students. Thanks to outstanding facilities and partnerships leveraged by staff across the University, our students experienced once in a lifetime opportunities to broaden their horizons and gain unrivalled experience as part of the UK City of Culture 2017 programme.

Katrina Rae, Drama and Music student

Thanks to cultivating relationships with the likes of the BBC, the University of Hull is offering students the chance to seize some amazing creative opportunities.

Katrina Rae, a Drama and Music student, was selected to perform recently on BBC Introducing, a showcase for new music and a hotbed for young talent. Gathering together talented students like Katrina, as well as inspirational music staff, the show was broadcast live from Middleton Hall's top-class music studios.

As part of a live broadcast, Katrina played a set of her own material from Middleton Hall, but whilst usually she would perform solo with just her guitar, this occasion gave her the opportunity to collaborate with classical music students, giving her songs a completely different sound.

On the back of her performance, she secured a gig as part of BBC Radio 1's Academy, which is designed to provide a week of inspiring events aimed at helping young people kick-start their careers in the creative industries.

"Being able to work with students who perform different styles of music - like collaborating with the classical music students for BBC Introducing - has really broadened my horizons when it comes

to my own material. If I wasn't here, I would never have thought of having strings on my songs but it really worked."

"I've always wanted to be a musician, however I do think that being able to perform at such awesome events has given me a lot more confidence and drive. I guess it's shown me that I've got as much chance as anyone else if I really want it enough. When I entered the competition for BBC Introducing I never, in a million years, thought I'd win."



I came to an open day at Hull and immediately wanted to come here. The staff, the facilities, everything was amazing..."

"I'm really inspired by the lecturers here. Not only are they really supportive of you as an individual, many are also performers - they know what it's like to write and play your own material because they do it themselves."

Katrina Rae,
Drama and Music student

Case Study

Professor Jane Thomas, English and Creative Writing

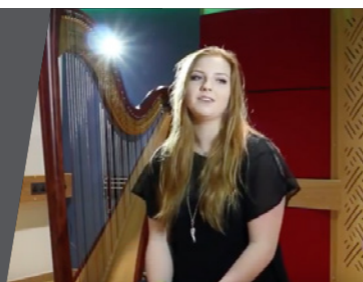
[View Video >](#)



Case Study

Pippa Brazier, music student

[View Video >](#)



About the Role: Wilberforce Professor of Slavery and Emancipation and Director of the Wilberforce Institute

The Wilberforce Institute for the study of Slavery and Emancipation, University of Hull, was founded in 2006, to mark the bicentenary of the Slave Trade Abolition Act. Located in Hull's Old Town, the Institute is named for William Wilberforce (1759-1833), who led the parliamentary campaign against the slave trade and is generally recognised as the 'father' of the British abolitionist movement. Wilberforce was successively MP for Hull and Yorkshire, and was born in Hull's High Street, next door to the Wilberforce Institute. We are justifiably proud of these associations and collectively we work to continue Wilberforce's legacy, producing world-class research that informs the modern campaigns to eradicate forced labour and human trafficking, both at home and abroad. The Institute was formerly part of the Faculty of Arts, Culture Education but since 2015 (and in line with the University's research strategy) it has been a designated University Research Institute. In recognition of its work, in 2016 the Wilberforce Institute was awarded the Queen's Anniversary Prize, which recognises work that is considered of 'outstanding excellence'.



Mission

Our mission is to produce high quality and innovative research on slavery in all its forms, historical and contemporary. We do not see these as separate fields of inquiry; on the contrary, we regard history as a lens through which to study contemporary issues regarding slavery and exploitation. This is our unique selling point. As a community of researchers, we are committed to disciplinary excellence and to interdisciplinary research that will benefit society on a national and international level. We collaborate with academic partners, NGOs, museums and business, and act as a forum for academic discourse and interaction on slavery past and present. We aim to maximise the benefits of research by advancing fundamental knowledge of slavery and emancipation, contributing to better public policy, social cohesion, community identity, education, the arts and the heritage sector.

Research

The Wilberforce Institute has a well-established reputation for producing ground-breaking research. Our work on slave voyages, led by Professor Richardson, has transformed at all levels the evidential for studying the transatlantic slave trade, providing researchers with reliable estimates of those carried from Africa to the Americas, as well as their origins and destinations. His Atlas of the Transatlantic Slave Trade (2010) has been described as 'one of the greatest historical achievements of our time'. The Institute has also produced prize-winning research on historical anti-slavery and has contributed to European projects that seek to integrate slavery and abolition into the history of Europe and its ex-colonies.

In the modern field, the Institute played a leading role in the development of the Global Slavery Index, which established important benchmarks for the quantification of contemporary slavery. Members of the Institute have also pioneered research on typologies of modern slavery, child labour, migration and human trafficking. Working with researchers in Nottingham and Liverpool, we have led efforts to create community-led projects in sub-Saharan Africa, aimed at building resilience in vulnerable communities in Ghana, Sierra Leone and the Democratic Republic of Congo, particularly among young people. This work is ongoing and complements similar initiatives that we are pioneering with community group in India through the Global Challenges Research Fund.

Funding

The Institute has a strong record of attracting funding research income, principally through research councils. Current projects include: The Anti-Slavery Usable Past, funded by the Arts and Humanities Research Council (AHRC); ECHOES, funded by the EU (Horizon 2020) and The Anti-Slavery Knowledge Network, again funded by the AHRC. In 2017-18, we also secured funding, from among others, The Leverhulme Trust and the Global Challenges Research Fund.

Partners

The Institute works in partnership with a wide range of individuals and organisations. These partners include: Walk Free, Anti-Slavery International, Free the Slaves, The Du Bois Research Institute (Harvard), the Gilder Lehrman Institute (Yale), the Human Trafficking Centre, Unchosen, Amnesty International and the Anti-Slavery Literature Project. The Institute also works with museums and heritage organisations, among them the International Slavery Museum (Liverpool) and the National Maritime Museum (London).

Policy

Since 2006, the Institute has been closely involved in work on slavery and forced labour, some of it funded by Oxfam and the Joseph Rowntree Foundation. Members of the Institute also advise local agencies, among them the Gangmasters Labour and Abuse Authority,



Key Responsibilities

The Director will be responsible for the overall strategic development of the Institute and for sustaining its reputation as a world-leader in the fields of historical and contemporary slavery.

First and foremost, they will provide academic leadership, through their own individual 3/4 * research, the mentoring and support of other research-active colleagues, through securing research grant funding and through building the postgraduate student base of the Institute.

The Director will also oversee the RAS and have responsibility for managing the Institute's engagement with a broad range of partners, including policymakers, NGOs, charitable organisations, business leaders, educators and museum professionals.

It is expected that all of these activities will be carried out at regional, national and international levels, with a specific requirement to internationalise research, enterprise and teaching activities.

The Director will be expected to develop and actively pursue an income generation strategy to enhance the growth and diversification of income streams, through grants and contracts for research, networking partnerships and collaboration with other relevant research institutes, both nationally and internationally.

They will participate in pan-University research-management activities and contribute to the overall strategic direction of the University.

The Director will manage and administer the Institute and its staff and resources within the University's delegation framework, ensuring that its governance, management and organisational processes, including finance and budgets, are effective, efficient and transparent. The postholder will report to the Pro-Vice-Chancellor for Research and Enterprise.

Slavery



Person Specification

Education and Training

Formal qualifications and relevant training

- A Doctorate in relevant discipline
- Evidence of working in an interdisciplinary research environment
- A Senior Fellowship (HEA) or equivalent recognition at this level within the UK Professional Standards Framework, and the willingness to achieve recognition at Principal Fellow level within 2 years from commencement of the post

Work Experience

Ability to undertake duties of the post

- A substantial reputation internationally for research, reflected in sustained output, level of innovation, impact on discipline or profession
- A substantial record of 3/4 * publications, including articles in relevant peer reviewed journals
- Successful, strategic leadership which has enhanced the research profile of the institution within an (inter)national settings
- Public engagement and collaborative partnerships with a wide range of relevant stakeholders
- A sustained record of successful PGR supervision including external examining of PhD students
- A track record on the development of funding sources and attracting significant research funds

Skills and Knowledge

Includes abilities and intellect

- Leadership role in the management, and support of strategic initiatives at subject, Faculty and/or University levels
- Significant contribution to the development of policy at University/Institute level
- Membership of appointment, assessment or advisory committees at other HEIs

Personal Qualities

Includes any specific physical requirements of the post - (subject to the provisions of the Equality Act 2010) This includes information about how you meet the requirements under additional information as stated in the job description documentation.

- Contribution to University activities and initiatives including open days, graduation ceremonies etc. and willingness to undertake administrative activities
- Working in an open and transparent way, providing information and communicating effectively with colleagues
- Collaborative working, particularly on interdisciplinary activities



Further Information



Remuneration

The role attracts a highly competitive starting salary. Further salary progression and enhancements will also be achievable, based on a combination of performance in role and regular salary benchmarking.



Pension

The University offers an opportunity to join the Universities Superannuation Scheme (USS).



Relocation

For those relocating nationally or internationally a generous relocation package is available. For further information please speak with: Gary S Scofield on G.S.Scofield@hull.ac.uk

Each year, we set out our University priorities under the structure of the People Plan and work collaboratively to deliver tangible improvements which support achievement of the University's ambitious goals.

It is a journey on which we need to focus on our objectives, celebrate the achievements and continue to aspire high. Our approach needs to be both flexible and agile to respond to the voices of our stakeholders and the ever-changing external world, but there must be consistent clarity of commitment to our overarching goals and true alignment with our University values and principles.

Appointment Process

Applications should consist of a CV accompanied by a covering letter addressing the criteria in the role information.

Applications will open on Friday 7th June 2019. Closing date for applications is noon on Friday 12th July 2019.

The Wilberforce Professor of Slavery and Emancipation and Director of the Wilberforce Institute, will be appointed by a formal Selection Committee who will hold a candidate review meeting shortly after the closing date.

Preliminary shortlisted candidates are warmly invited to visit / contact the University and individual arrangements can be made to facilitate meetings and / or conversations.

Process concludes with shortlisted candidates meeting the Selection committee for the formal interview process, chaired by the Vice-Chancellor in early August 2019.

An appointment will be made subject to satisfactory references, in line with the usual terms and conditions of employment at the University.

* The equal opportunities monitoring online form will not be shared with anyone involved in assessing your application. Please complete as part of the application process.

Applications via:

<http://jobs.hull.ac.uk/AE0168>

Recruitment Statement

We want to provide full information to you at an early stage to enable you to make an informed decision as to whether you are committed to pursuing this position and to outline the University's expectations of all candidates taking part in our recruitment process.

Once you have reviewed the information in this brochure, and in fairness to everyone concerned, we would ask that you give serious consideration to proceeding further with this process if you think you may not accept the position should it be offered to you.

The role will be located in Hull and there is a requirement that the successful candidate will live within commuting distance of the Hull campus. If this might involve a re-location for you, it is of course important that candidates consider how the move might affect anyone who may accompany you (for example, early consideration may need to be given to local schooling, housing and other employment

opportunities where other family members are involved as early as possible). We will support you as much as possible with this and are happy to discuss any concerns you may have. We would ask you to agree to undertaking a positive, open, and transparent dialogue with us throughout the recruitment process, raising questions and any concerns as early as possible.

Information relating to the reward package, along with relocation details, if applicable, will be supplied to those short-listed for interview. Hull engages in a variety of domestic and international benchmarking exercises to ensure we are extremely competitive in the level of reward and recognition we provide, therefore we are confident that any offer made will be strong and competitive.

If you are happy to continue in your application for the position in light of the above expectations, we would very much look forward to hearing from you.

Your Life in East Yorkshire

East Yorkshire and Northern Lincolnshire has something to offer everyone - a place where your family can go walking in the Wolds one weekend and be on the beach the next. A place that was UK City of Culture 2017 and where you can afford to choose between a beamed cottage in a picturesque village or a large family home overlooking the Humber Estuary.



Deciding to relocate is a big decision for all the family and you need information on everything, from homes and businesses to sports and events.

As a region, the area is progressive, seeing billions of pounds worth of private sector investment across multiple thriving industries - leading to a diverse array of opportunities, which also include public sector improvements: such as the development of multi-million pound leisure and cultural facilities. Investment in retail and historical realm works are also being made across all four local authorities - enhancing the area's vibrancy and solidifying its legacy for future generations to come.

The region offers low commute to work times allowing that sought-after work-life balance, lower than average house prices, a fantastic choice of schools and areas of unrivalled natural beauty.

This remarkable region has so much to offer in terms of landscape and heritage, and something for all the family when it comes to shopping, dining and days out. And, with the beautiful countryside of the Lincolnshire and Yorkshire Wolds making up a huge proportion of the area, outdoor lovers will have a wealth of different areas for walking, riding, cycling and running.

When it comes to dining out, the Humber boasts an eclectic array of award-winning restaurants, gastro pubs and independent coffee shops with delicious, fresh and locally-sourced produce. From a fantastic selection of shops, with everything from designer boutiques, high street shopping and independent retailers; you'll be spoilt for choice if you're after some retail therapy.

There has never been a better time to make Hull your home, as the cost of living remains among the lowest in the UK and following its incredible transformation - this is only the beginning.

By 2019 the redevelopment of Hull's Fruit Market will be complete; the £80m project will include 109 new homes that will sit alongside a hub of independent shops, boutiques and the beautiful Marina. The development will become Hull's 'urban village: a unique and vibrant cultural quarter that seeks to marry Hull's incredible history with its ever-growing cosmopolitan culture.

Beverley is one of the largest market towns where life is thriving with an eclectic combination of designer boutiques, award-winning restaurants and independent cafés. Architecturally, it's a unique and beautiful place; cobbled streets lined with Georgian houses surround the town centre with its striking Minster poised above the skyline.

Find out more about the region at:



Candidates should apply for this role through our website at **<http://jobs.hull.ac.uk/AE0168>**




alternatively, please contact:

Professor John Oldfield

Director, Wilberforce Institute
for the study of Slavery and Emancipation
John.Oldfield@hull.ac.uk

University of Hull,
Cottingham Road,
Hull, HU6 7RX
United Kingdom

T: +44 (0)1482 346311
E: enquiries@hull.ac.uk

 @UniOfHull
 /UniversityOfHull
 universityofhull



**UNIVERSITY
OF HULL**

GDPR personal data notice

According to GDPR guidelines, we are only able to process your Sensitive Personal Data (racial or ethnic origin, political opinions, religious or philosophical beliefs, trade union membership, genetic data, biometric data, health, sex life, or sexual orientation) with your express consent. You will be asked to complete a consent form when you apply and please do not include any Sensitive Personal Data within your CV (although this can be included in your covering letter if you wish to do so), remembering also not to include contact details for referees without their prior agreement.